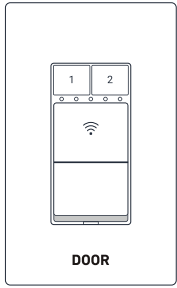


DOOR



Power Switch

Quick Start Guide 2024

Door.com

A Welcome!

Thank you for choosing DOOR products!

At DOOR we're reinventing how we live. Through the foundation of access control business, we serve the Honest Day's Worker—the builder, property manager, contractor, driver, and in-home service provider—that keeps the world running smoothly.

These individuals are the cornerstone of vital services such as housing, transportation, cleaning, dog walking, and more. They deserve access to technology and products that empower them to provide top-notch experiences to their customers while maximizing the economic benefits of their hard work.

DOOR is proud to stand by and innovate for our Honest Day's Worker every day!

B Before You Begin

Please note the following user guide icons:

- Very important information, please read carefully
- Good to know, helpful tips for installation



This device connects to the internet via DOOR Field Station, and it does not connect directly to your WiFi or local network. In order for remote access to the device from the app, and for full functionality, a DOOR Field Station is required.

This guide assumes the DOOR App has been installed on your smartphone and a Field Station is installed and online.

- Please note this device is intended for indoor use only. We also recommend reviewing the environmental limitation of your device prior to installation.

- Familiarize yourself with this user guide prior to beginning installation.

- If you are not comfortable working with electricity or handling the necessary tools, we recommend hiring an electrician to install your device.



This device requires a neutral wire; if a neutral wire is not present, one must be installed.

It will not function without a neutral wire. As explained in the Installation section, you must identify the neutral wire in the switch's electrical box. Consult with or hire a qualified and properly licensed electrician, as required.

B Before You Begin

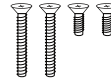


This device is not compatible with 3-way switches or 3-way style wiring, but 3-way operation functionality can be accomplished using two Smart Switches, wired as standard switches, and paired using Control-D2D pairing. This pairing process is explained in the Control-D2D pairing section of the user guide.

C In the Kit



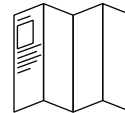
Power Switch



Faceplate Screws (2) & Electrical Box Screws (2)



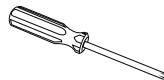
Wire Connectors (4)



Quick Start Guide

D Required Items

The following items may be required:



Medium Phillips Screwdriver



Small Slotted Screwdriver



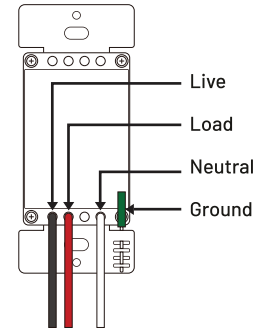
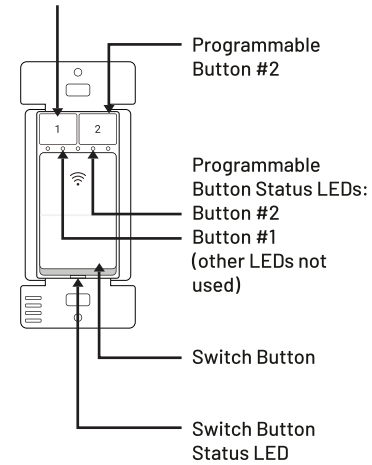
Wire Strippers or Cutters



Multimeter

E Get to Know Your Device

Programmable Button #1



Status LED Behaviors

- Solid Green**
Switch is On
- Solid Red**
Switch is Off
- Blinking Green**
Control-D2D Pairing in Progress
- Blinking Red**
Control-D2D Unpairing in Progress

Programmable Button LED Behaviors

- Blink Green Once**
Button One Tap Activated
- Blink Red Once**
Button Long Press Activated

F Add Device To DOOR App

If you are new to DOOR, please install the DOOR App on your phone, if you have not already.



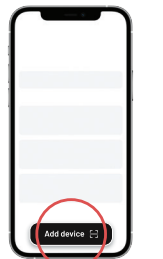
Open the app and tap **Sign up** for an account. You will be required to provide a username and a password. Follow the instructions, to set up a new account. Allow notifications, when prompted. **Log in** to the app using your new username and password. If you already have an account, please ensure you log in using that one.

Ensure you install the Field Station within the app before proceeding to install the Power Switch.

1 In the Home screen of the app, tap on the card located in the top right.

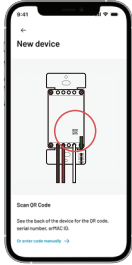


2 Tap on the "Add device" icon.



F Add Device To DOOR App

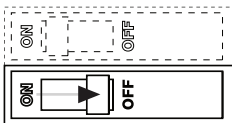
3. Approve access to your phone's camera, if requested. A viewfinder will be shown on the app.



4. Hold the phone over the QR code so that the code appears in the viewfinder. If successful, the next steps will be displayed.
5. Follow the on-screen instructions in the **DOOR App**, which will guide you step by step.

G Installation

1. Turn off the circuit that serves the switch at the circuit breaker panel (or other means of disconnecting the AC power to the circuit). Do NOT work on "hot" electrical wiring! Verify that power has been removed to the light switch, by testing the switch, and by using a multimeter or other type of voltage tester before removing any wires from the switch.



If replacing an existing switch, proceed to the next step. For new installations, skip ahead to step 8

2. Using a slotted screwdriver, remove the switch faceplate, then using a slotted or Phillips screwdriver, remove the switch and pull it away from the wall. Retain the screws; do not discard.

G Installation

3. Before removing any wiring from the switch, identify the wires on the switch and in the electrical box

Ground wire: this wire is typically a bare copper wire, but it may have a green jacket (insulation), or it may have another color insulation with green tape identifying it as a ground. Additional means of identification are the wire is terminated on (connected to) a green screw on the switch, and/or the screw or wire connection has a designation such as "GND" and/or includes the universal earth ground icon:



Line or Hot Wire: this wire is typically black, but can be red or another color, but if not it may be marked as the hot wire with black or red tape. One of the wires on the existing light switch should be the hot wire. Another way of identifying this wire is that it may be connected to other wires in the box. If the box contains multiple switches, for example, there will typically be a hot wire that connects to each switch. Observe each of the non-ground wires on the switch, looking for connections to other black (or red) wires under a "wire-nut" or similar wire connector.

6. Prepare to terminate (connect) the wires to the **Power Switch**. Refer to **Figure 1**. The following wires should have been removed from the existing switch, ready to terminate on the new switch:

Ground wire
Switch leg wire (to light/lights)
Hot/Line/Live wire

If there are multiple neutral wires in the box, as shown in **Figure 1**, you may need to furnish a jumper wire, to connect the neutral wires to the **Power Switch**. If you do not have wire on hand, if there is enough spare length or slack in the wires, you may be able to cut off a short section, to make a jumper wire.

7. Each wire must have the end stripped (insulation removed) approximately 1/2 inch, and straight. Straighten or trim off any bare wire loops that were used on the existing switch.



8. Connect the wiring to the **Power Switch**. Place the switch's live (black) wire, and the live wire(s) in the box under one wirenut, twisting the wirenut until tight. "Wirenut" the remaining wires together, as shown in **Figure 1**.

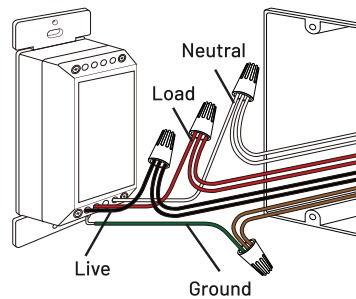


Figure 1

9. Check each wirenut connection by gently tugging on each wire, ensuring it does not pull out of the wirenut. Redo any connections that do not pass this test.

10. Gently push the wiring and the switch into the electrical box. Then, using the original or included screws, secure the Connected Power Switch to the box, as shown in **Figure 2A**.

11. The **Power Switch** is shipped with a matching decorative trim plate ("faceplate") and accompanying base plate. If installing the Power Switch in a new or existing multi-gang box, save or discard these plates, as they will not be used. After installing your own switch faceplate/trim, proceed to step 13.

Otherwise, secure the base plate to the Connected Power Switch, using the two included faceplate screws, as shown in **Figure 2B**.

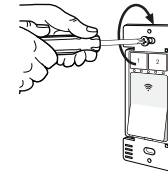
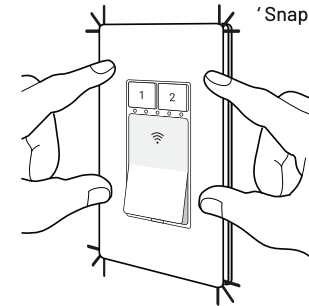


Figure 2A

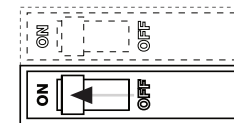


Figure 2B

12. Snap the (outer) faceplate to the base plate, as shown.



13. Turn on power to the circuit by returning the circuit breaker to the on position (or reconnect power per your applicable circuit disconnection method).



14. Test the switch by turning it off and on and verifying the lights turn off and on with it.

15. Check the status of the switch in the app. It should be indicated as Online.

H Contact Us

DOOR

Support
support@door.com

Door Technologies, Inc.
www.door.com
1220 N Price Rd
STE 2
Olivette, MO 63132

Copyright © 2024
Door Technologies, Inc.
All rights reserved.

To install and configure devices
download the **DOOR App**:

